

# OPERATING INSTRUCTIONS

## 3660G



DENRAY MACHINE	
(800) 766-8263	
MODEL NUMBER	3444B Super
SERIAL NUMBER	475389
MOTOR HP	3
AMP	15.0
VOLTAGE	220-1Ph / 60 Hz
FAN TYPE	18" Comfri Fan
MFG DATE	10/29/18
FILTER NUMBER	EO 5814
TABLE NUMBER	9017
SWITCH TYPE	A16S2 Overload TF42-29
<small>Light Bar--Spun Bond--HEPA Bank--Plastic Top 7" Vise ----0 Hp 18" Fan</small>	

**To find YOUR tables pertinent information please locate the table sticker on your table.**

\*Please note the image above is a "generic" table sticker for visual purposes only! The table sticker on your machine reflects how it left the manufacturer and does not reflect any after-market changes made by previous owners. If you have questions please call Denray Machine at (800) 766-8263.

## WARRANTY

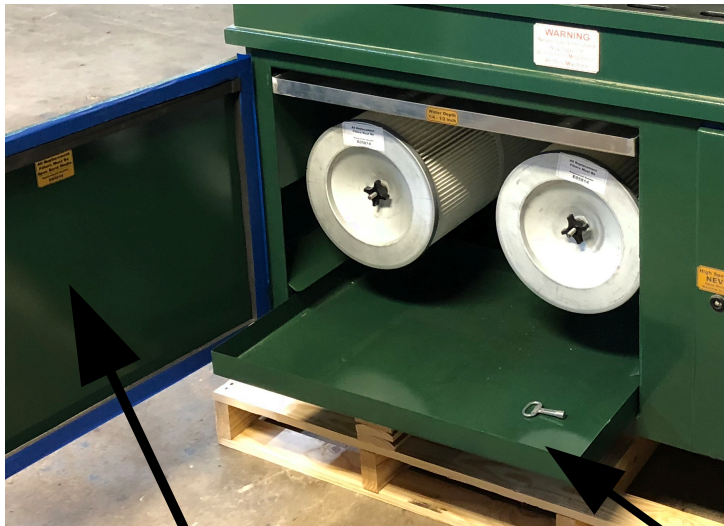
This Machine is covered with a 12 month warranty. The warranty covers replacement parts, except filters and wooden top (if applicable). The only way Denray will cover the labor is the work must be done by Denray at Denray's Facility. The shipping must be provided by the customer (owner of the machine) both ways. You may contact the dealer you purchased the machine from, and discuss with them, the possibility of their assistance in helping to solve the problem in your facility. Denray assumes or accepts no responsibility more than the cost of the machine. In the case of repair Denray will determine either to fix or replace the product. Denray reserves the right to modify or change the design of this and any model of their machines, without changing or updating any previous manufactured machine. The warranty will not cover any damage done by fire or any other act of nature or if abuse or improper maintenance was or was not performed.

Never Allow Any Unauthorized or Untrained Person To Operate This Machine

Lockout and tagout any time maintenance is performed on this machine

**WARNING**  
**NEVER GRIND OR SAND ANY ALUMINUM OR MAGNESIUM PRODUCT ON THIS MACHINE**

Filters are the main need of maintenance, the cleaner the filters are kept the better the machine will perform. This machine is equipped with timers to clean the filters, every so many minutes a pulse of air will be released into one of the filters, and a few minutes later the other filter will be pulsed, the time is needed to refill the tank. The time between pulses are adjustable, refer to the electrical diagram. Warning if the time is reduced between pulses the filter may plug up reducing the machines performance. The filters can also be pulsed with the machine off, it may blow dust back into the work area, so caution should be used here, pulse the machine then turn machine on to pull dust back into the filters.

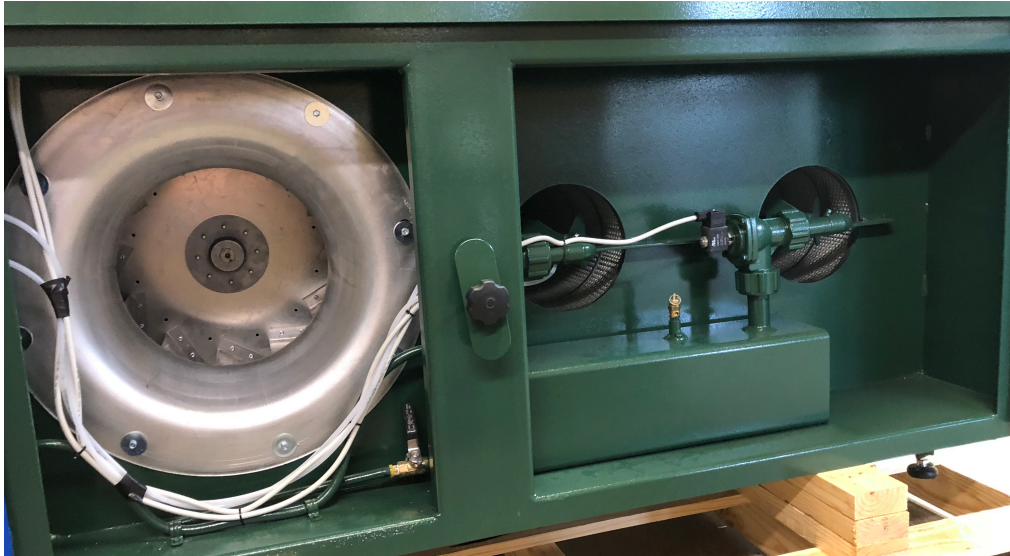


The filters will clean better with machine off, you may shut machine off and before it slows down to a complete stop, pulse the filter and allow the fan to prevent the dust from exiting the filter compartment. Filter replacement number is on the inside of the filter door. Be sure to replace with same type of filter or a filter made of polyester media.

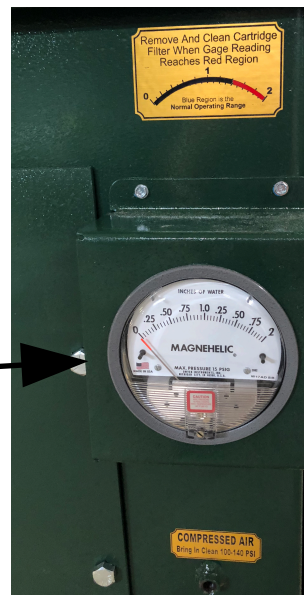
Filter replacement number Is on inside of this door. MUST replace with the proper fire retardant filter

Dust Drawer Clean regularly, as needed

# 3660G Grind



Magnahelic Gage To measure  
The condition of the filter

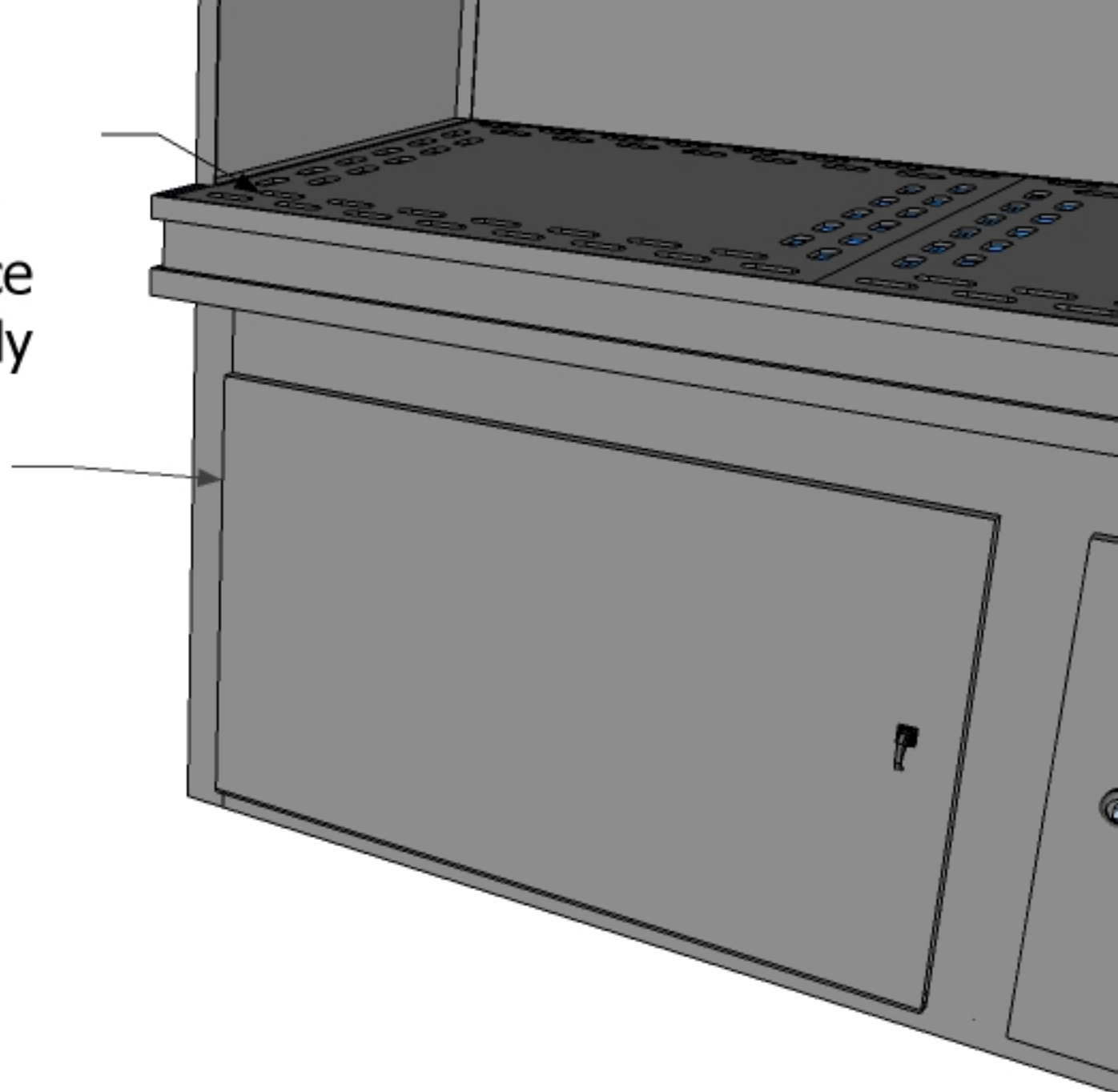


Motor 2HP 230/460 3 Ph  
16.5" BI Industrial Fan  
4400 CFM at 1" static  
90-120 PSI of Compressed Air Required  
Work Area 72" wide 36" Deep, 36" Tall

## 1/4" Plate Top

Designed to improve perimeter suction, provide a flatter surface for laying out parts for assembly

NEVER open either door while the machine is running  
The cleaning pulse may activate while door is open which may result in an injury



**NEVER OPEN DOORS WHILE MACHINE IS RUNNING**



## Water Pan And Dust Drawer Pulled Out

Water pans made from a non-rust aluminum, to help keep the water cleaner and safer.

Must keep between 1/4-1/2" of water in the pan at all time  
The water pan will collect alot of the dirt that is being collected, a regular schedule of cleaning will be needed.

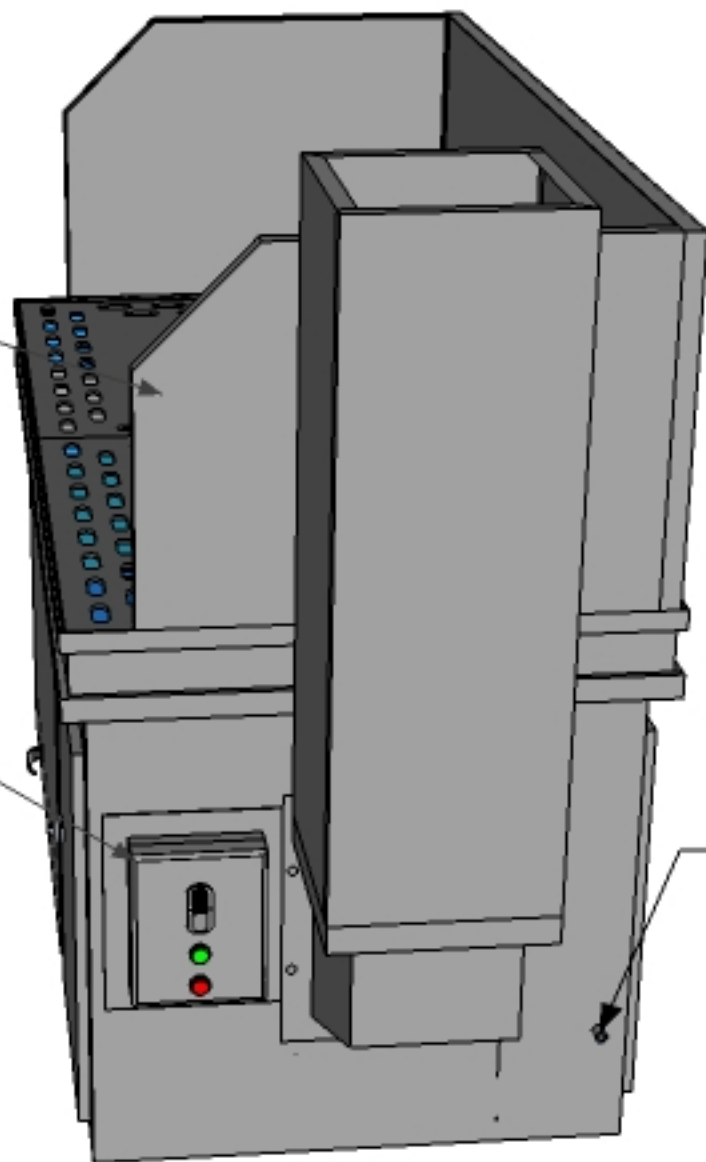
Dust Drawer to catch the dirt after being pulsed out of filters, this drawer must be removed and dumped or cleaned as needed. Warning if allowed to become full, it will be heavy to carry to dumpster.



**NEVER OPEN DOORS WHILE MACHINE IS RUNNING**

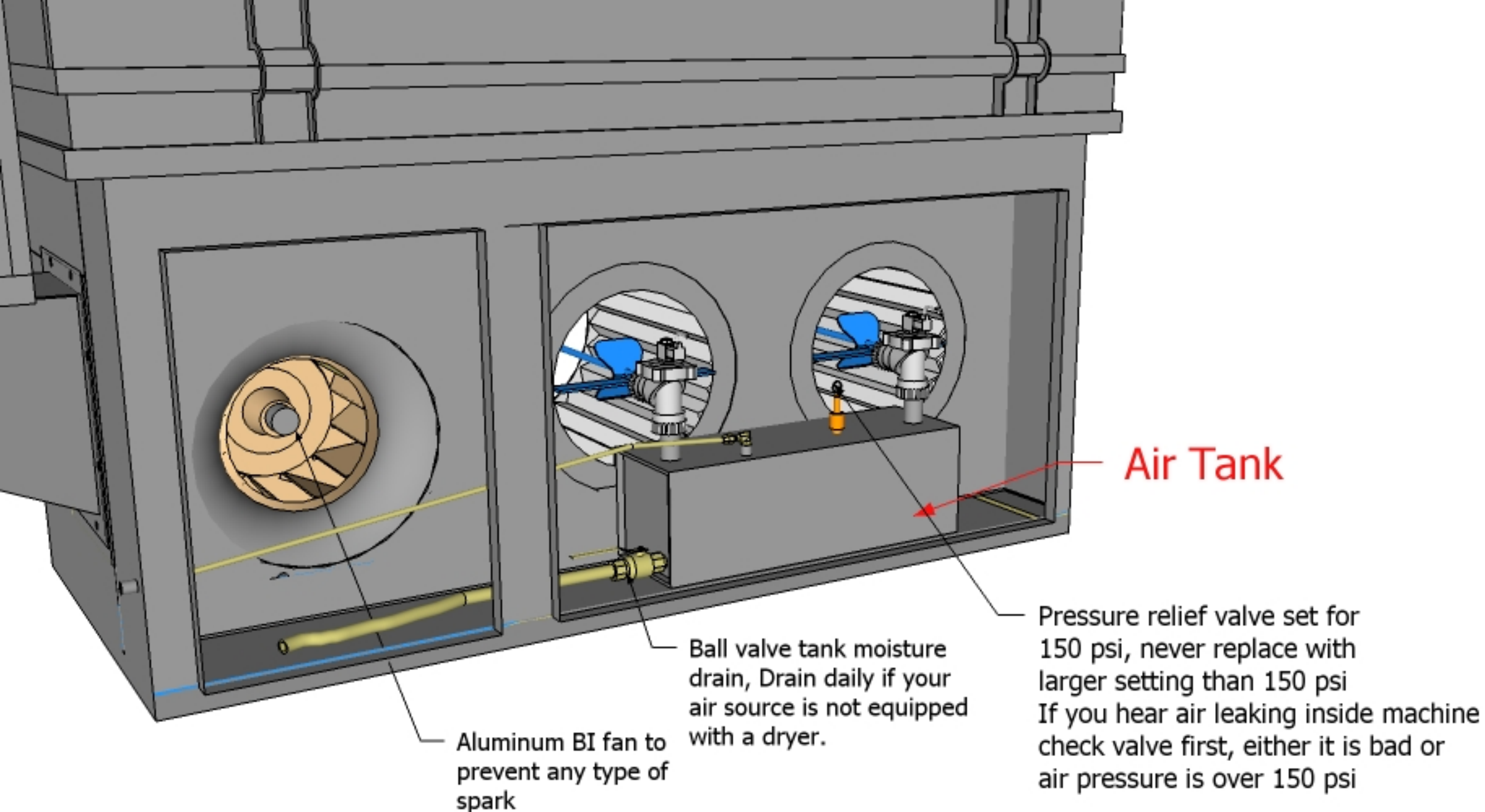
Sides are hinged so they can be swung out to allow long items to be processed

Motor starter and controls see diagram for details



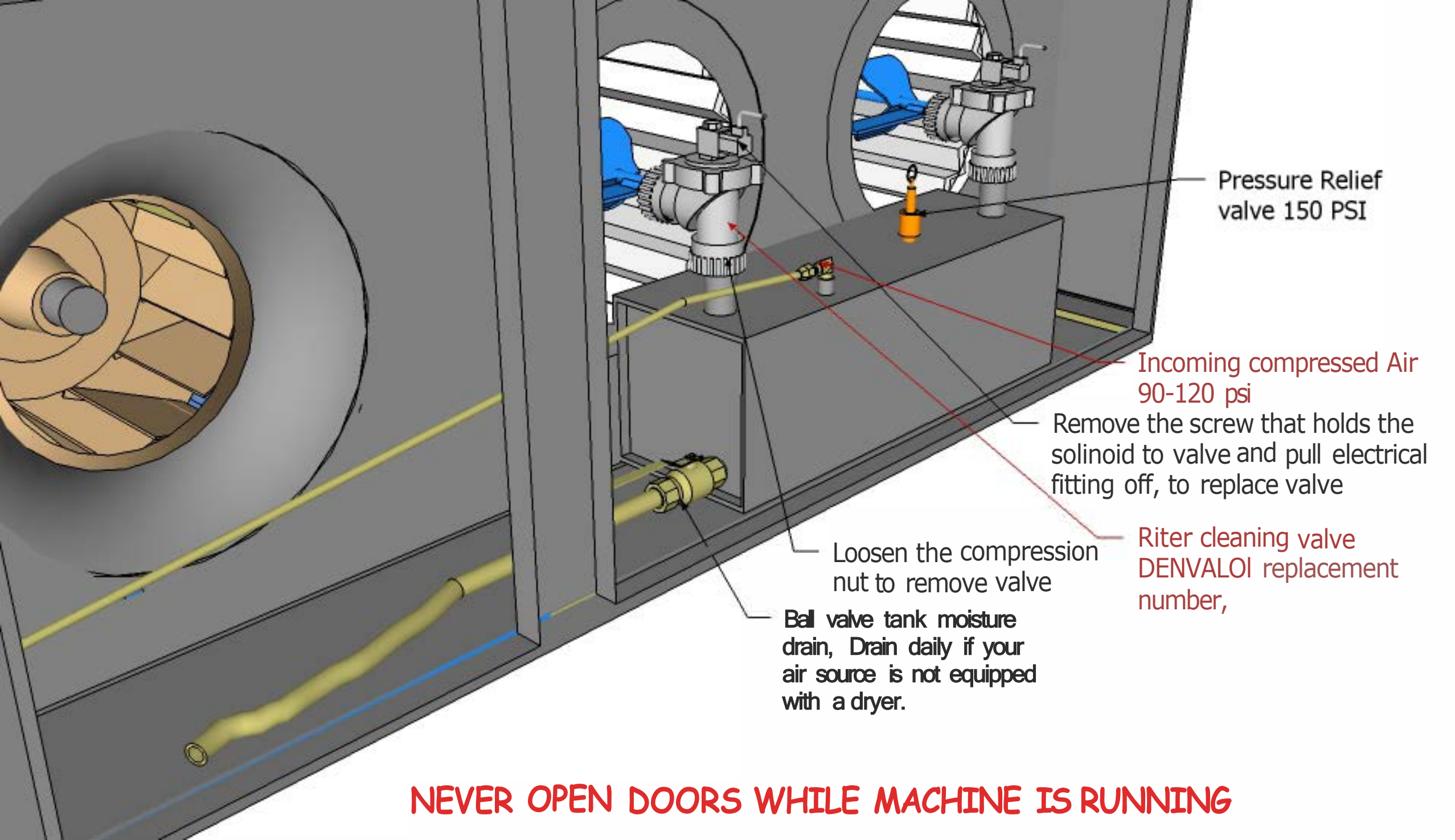
Bring 90-125 PSI compressed air here

**NEVER OPEN DOORS WHILE MACHINE IS RUNNING**



**NEVER OPEN DOORS WHILE MACHINE IS RUNNING**





Pressure Relief valve 150 PSI

Incoming compressed Air 90-120 psi

Remove the screw that holds the solinoid to valve and pull electrical fitting off, to replace valve

Riter cleaning valve DENVALOI replacement number,

Loosen the compression nut to remove valve

Ball valve tank moisture drain, Drain daily if your air source is not equipped with a dryer.

**NEVER OPEN DOORS WHILE MACHINE IS RUNNING**